

# Human *AGT*-p.Met268Thr and coronary heart disease risk: a case-control study and meta-analysis

HANIEH MOHAMMADI<sup>1, B-F</sup>, NARGES RAZAVI<sup>2, E-G</sup>, ALI ABBASI<sup>2, A, D, F</sup>, FAEZEH BABAEI<sup>2, B, C, E</sup>, ENSIYEH SEYEDREZAZADEH<sup>3, C-F</sup>, ABASALT HOSSEINZADEH<sup>4, A, D-G</sup>

<sup>1</sup> Student Research Committee, Kashan University of Medical Sciences, Iran

<sup>2</sup> Department of Cardiology, School of Medicine, Kashan University of Medical Sciences, Iran

<sup>3</sup> Tuberculosis and Lung Disease Research Center, Tabriz University of Medical Sciences, Iran

<sup>4</sup> Department of Molecular and Cell Biology, Faculty of Basic Sciences, University of Babolsar, Iran

**A** – Study Design, **B** – Data Collection, **C** – Statistical Analysis, **D** – Data Interpretation, **E** – Manuscript Preparation, **F** – Literature Search, **G** – Funds Collection

**Summary Background.** Polymorphisms in genes, which is involved in the renin–angiotensin system, play an important role in the pathogenesis of coronary heart disease (CHD). Polymorphism of c.803T>C in the human *angiotensinogen* gene results in methionine (M) to threonine (T) substitution at codon 268 (p.Met268Thr), which traditionally has been known as M235T. This polymorphism may contribute to cardiovascular diseases.

**Objectives.** The aim of this study was to investigate the association between p.Met268Thr polymorphism in the *angiotensinogen* gene and coronary heart disease (CHD) through a case-control study, which is followed by a meta-analysis.

**Material and methods.** In the case-control study, c.803T>C genotyping of 217 subjects (102 CHD cases vs 115 controls) was investigated by the polymerase chain reaction–restriction fragment length polymorphism (PCR–RFLP) method. In the meta-analysis, 31 studies were included, reflecting 12,028 people with CHD and 16,362 healthy controls.

**Results.** The data from the case-control study revealed that MT (OR, 1.875; 95%CI, 1.060–3.316;  $p = 0.031$ ) and TT (OR, 3.389; 95%CI, 1.251–9.179;  $p = 0.016$ ) genotypes are significantly associated with CHD. The meta-analysis revealed a significant association in the recessive model (OR, 1.156; 95%CI, 1.011–1.321;  $p = 0.034$ ).

**Conclusions.** Although the pooled OR of the meta-analysis showed that there is an increased risk of CHD conferred by p.Met268Thr of the *AGT* gene, this association was weak, which could be attributed to a bias in publications.

**Key words:** coronary disease, angiotensinogen, genetic polymorphism, meta-analysis.

Mohammadi H, Razavi N, Abbasi A, Babaei F, Seyedrezazadeh E, Hosseinzadeh A. Human *AGT*-p.Met268Thr and coronary heart disease risk: a case-control study and meta-analysis. *Fam Med Prim Care Rev* 2018; 20(1): 17–24, doi: <https://doi.org/10.5114/fmpcr.2018.73699>.

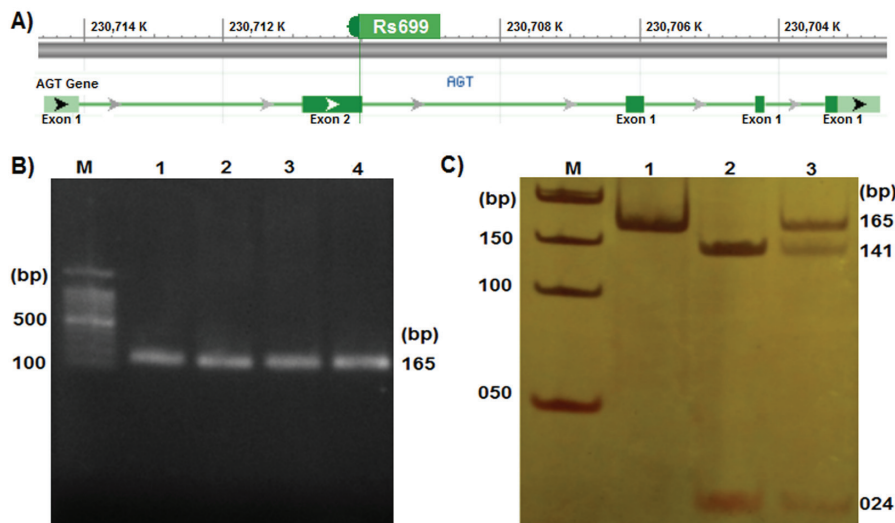
## Background

Coronary artery disease (CHD) is a major health burden in both developed and developing countries, which leads to morbidity and mortality throughout the world [1]. Epidemiological studies demonstrated that a diet high in fat, lack of physical activity, smoking, cholesterol and hypertension are the major risk factors of development of CHD [2], although it has been speculated that CHD is a multifactorial disease with a great contribution from genetic factors [3]. Clinical observations in the 1950s demonstrated that the CHD risk is heritable. A scientific project in more than twenty thousand Swedish twins established the discovery of increased susceptibility of CHD among close relatives, and this project estimated a heritability of ~50% for CHD [4]. In addition, an updated genome-wide association approach similarly estimated the heritability of CHD at 40–50%. Such studies are the basis for the emergence of genetic approaches to comprehending the underlying genetic basis of CHD, to discover innovative structural biology and to interpret these discoveries into clinical training [5]. Despite the tendency to cluster in families, CHD is an intricate and common disease. Genotyping chips designed to identify common genetic variation have provided the basis for common polymorphism association studies and genome-wide association studies. Since common genetic variants happen relatively often, it is useful to

evaluate each variant separately by comparing its incidence in case studies and healthy controls [6]. One efficient description of ‘common’ is a variant with an allele frequency of more than 0.5% [7]. The first genetic association studies for CHD were reported in 2007, and 3 independent groups described common variations at chromosome 9 (9p21) that correlated with an increased risk of CHD. Further studies have repeated this outcome and extended the association to other vascular diseases, such as stroke, peripheral arterial disease, and carotid atherosclerosis [5]. Since 2007, increasingly greater sample sizes have been employed to investigate the genetic basis of CHD, making about 60 separate genetic locus for CHD. These accumulative experience results permit numerous conclusions. First, a large number of these variations have a minor allele frequency of more than 5% in the population, they are correlated with mild increases in CHD risk (e.g. < 20% alteration in CHD risk per allele), and the generally explain 30 to 40% of CHD heritability [5]. By contrast, fifteen low-frequency polymorphisms explained only 2% of CHD heritability [8].

However, a study on the association of common variants in key genes involved in CHD could be helpful for screening projects. In humans, the rennin–angiotensin system (RAS) plays an important role in the maintenance of salt-water balance and controlling blood pressure [9, 10]. Several genes are participating in RAS pathways as *angiotensinogen* (*AGT*; OMIM: 106150)





**Figure 1.** Human AGT gene map and p.Met268Thr genotyping

**A)** AGT gene map that the p.Met268Thr is located on exon 2; **B)** PCR product of exon 2 with 165-bp, which contains p.Met268Thr [lane M = 100-bp DNA ladder]; **C)** Digestion map for 165-bp PCR fragment by *PstI* restriction enzyme [lane M = 50-bp DNA marker; lane1 = MM genotype; lane2 = TT genotype; lane3 = MT genotype].

[11], *angiotensin I-converting enzyme (ACE)* (OMIM: 106180) [12] and *angiotensin II type 1 receptor (AGTR1)* (OMIM: 106165) [13], which are noteworthy targets. These genes are considered to influence the inherited predisposition toward CHD [14]. There is a common single nucleotide polymorphism (SNP) at location 803 (c.803T>C; SNP ID: rs699) on exon 2 of the AGT gene (Figure 1A). This polymorphism resulted in substitution of methionine residue to threonine at codon 268 (p.Met268Thr), which is traditionally known as M235T [15]. In recent years, the correlation between the molecular variant of the AGT gene (p.Met268Thr) with CHD has started to receive attention. Numerous studies have investigated the association between this substitution and CHD in different populations [16–18]; however, the results are inconsistent.

## Objectives

The aim of this study was to investigate the association between p.Met268Thr polymorphism and CHD through both a case-control study and a meta-analysis study.

## Material and methods

### Study design

In a case-control study, patients with diagnosed CHD and control subjects without any history of cardiovascular disease were included into the study.

### Participants

Blood samples of 102 admitted CHD patients were collected from patients who were admitted to the Coronary Care Unit of the Shahid Beheshti Hospital (Kashan, Iran) between 2013 and 2015. 115 healthy individuals without a history of cardiovascular diseases were recruited from the Local Blood Donor Center in Kashan, Iran, as a control group. A complete description for subject selection was presented previously [19]. CHD was confirmed angiographically by stenosis severity 50% or more in at least one major coronary artery. The exclusion criteria were as follows: clinical symptoms of coagulopathy, collagenosis, cardiomyopathy and acute poisoning (such as amphetamine and CO). Exclusion criteria for the healthy blood donors were as follows: symptoms of myocardial infarction (MI), CHD, diabetes mellitus and other genetic and familial diseases. A signed informed consent was taken from all participants. Approval of the Local Ethics Committee was obtained from Kashan University of Medical Sciences. The demographics of study participants are summarized in Table 1.

Parameters		Controls (n = 115)	CHD (n = 102)
Gender	male	76	65
	female	39	37
Age, mean ± SD	years	61.09 ± 5.09	50.42 ± 7.39
BMI, mean ± SD	kg/m <sup>2</sup>	29.99 ± 2.67	32.64 ± 2.60
Smoking	yes	38	57
	no	77	45
Triglyceride, mean ± SD	mg/dL	120.13 ± 40.46	129.33 ± 35.64
High-density lipoprotein, mean ± SD	mg/dL	38.87 ± 5.18	43.07 ± 6.46
Low-density lipoprotein, mean ± SD	mg/dL	106.93 ± 27.65	111.27 ± 18.12

### Setting

We examined just one gene polymorphism (AGT-p.Met268Thr) by polymerase chain reaction restriction fragment length polymorphism (PCR-RFLP). Total genomic DNA was isolated from blood samples using a DNGplus buffer (Cinnagen Co., Tehran, Iran). AGT-p.Met268Thr gene polymorphism was genotyped by the PCR-RFLP method and primers sequences, which were described by Nalbantoglu et al. [20]. (All of the PCR reagents were purchased from Fermentas Co., Sankt Leon-Rot, Germany). AGT fragments with p.Met268Thr polymorphism were amplified by the following PCR program: initial denaturation at 94°C for 5 min. and 35 repetitive cycles 94°C for 30 sec., 59°C for 45 sec., and 72°C for 1 min. followed by final extension at 72°C for 10 min. in a Mastercycler gradient (Eppendorf Co., Hamburg, Germany). The 165-bp amplified fragment (Figure 1B) was treated by a *PstI* restriction enzyme (Fermentas) at 37°C for 16 h. The digested mixture was electrophoresed in 8% polyacrylamide gel and visualized by silver nitrate (AgNO<sub>3</sub>; Cinnagen) staining [21]. The 268TT homozygous genotype produced two fragments of 24-bp and 141-bp. The 268MT heterozygote genotype produced three fragments of 24-bp, 141-bp, and 165-bp, whereas the 268MM homozygous wild-type produced one fragment of 165-bp (Figure 1C). The validity of PCR-RFLP was confirmed by DNA direct sequencing, performed by the Bioneer Company (Daejeon, South Korea).

### Meta-analysis

The literature included in this analysis was selected using PubMed, Google Scholar, Elsevier, Springer and Link databases

with the keywords 'angiotensinogen', 'AGT gene', 'M235T', 'polymorphism' and 'coronary heart disease'. All extracted articles were studied carefully. Any experimental studies were included if they applied the following criteria: The case-control design had been used to provide p.Met268Thr genotype frequencies; Genotype frequency in the control group should be in the Hardy–Weinberg equilibrium; Applicable data was accessible to calculate the odd ratio (OR) and its 95% CI. According to the previous characteristics, the data, including name of first author, year of publication, ethnicity and frequency of genotypes, was extracted from the papers by two students.

## Statistical methods

Statistical analysis was done using SPSS ver. 19 software (SPSS Inc., IBM Corp Armonk, NY, USA). The Hardy–Weinberg equilibrium (HWE) was evaluated using the Chi-square test. Differences in the p.Met268Thr genotypes and allele frequencies between the controls and cases were compared by this test. The association of the genotypes and alleles with CHD risk was expressed in terms of the odds ratios (OR) and 95% confidence interval (CI). A  $p$ -value less than 0.05 ( $p < 0.05$ ) was considered statistically significant.

In the meta-analysis, we first estimated the OR and 95% CI for each of the studies. The following four genetic models were then used: MT+TT vs MM as a dominant; TT vs MT+MM as a recessive; TT vs MM and TM vs MM as co-dominants. The values of each study were combined by Mantel–Haenszel fixed effects [22] or random effects models [23]. The  $I^2$  statistic was calculated to measure the consistency between trials [24]. The fixed effect model was used when the heterogeneity was non-significant ( $p < 0.1$ ); otherwise, the random effect model was used. A funnel plot was applied to calculate publication bias. The Comprehensive Meta-Analysis (Biostat, Inc., Englewood, NJ, USA; <https://www.meta-analysis.com/>) and Open Meta Analyst (Tufts University, Medford, MA, USA; <http://www.cebm.brown.edu/openmeta/>) software were used for all calculations in the meta-analysis.

## Results

### Main results

The distribution of AGT genotypes for p.Met268Thr polymorphism was in the Hardy–Weinberg equilibrium in the control groups ( $\chi^2 = 0.272$ ;  $p = 0.602$ ). The AGT-p.Met268Thr allele and genotype frequencies for both control and CHD groups are shown in Table 2. The TT genotype was significantly higher in patients with CHD than the healthy control group (OR, 3.389; 95% CI, 1.251–9.179;  $p = 0.016$ ). The carriers of the MT genotype were at a high risk for CHD (OR, 1.875; 95% CI, 1.060–3.316;  $p = 0.031$ ). Carriers of T allele (MT+TT) were significantly higher in patients than in the healthy control group (OR, 2.071; 95% CI, 1.199–3.578,  $p = 0.005$ ). Similarly, the frequency of T allele was significantly higher in cases than in the control group (OR, 1.787; 95% CI, 1.191–2.682;  $p = 0.005$ ).

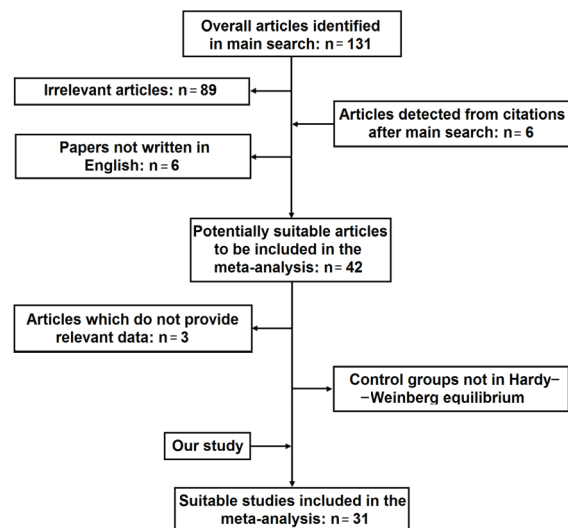
**Table 2. Genotype and allele frequencies of p.Met268Thr in cases and controls**

Genotype/ Allele	No. and Percentage		OR (95% CI)	$p$
	Control ( $n = 115$ )	Case ( $n = 102$ )		
MM	61 (53.04%)	36 (35.29%)	–	–
MT	47 (40.87%)	52 (50.98%)	1.875 (1.060–3.316)	0.031
TT	7 (06.09%)	14 (13.73%)	3.389 (1.251–9.179)	0.016
MT+TT	54 (46.96%)	66 (64.71%)	2.071 (1.199–3.578)	0.005
M	169 (73.48%)	124 (60.78%)	–	–
T	61 (26.52%)	80 (39.22%)	1.787 (1.191–2.682)	0.005

OR – odds ratio; CI – confidence interval. Significant differences between the case and control groups are in bold.

### Other analyses

Based on the inclusion criteria, a total of 30 studies were retrieved [16–18, 25–50]. The data from our study was also added to the meta-analysis (Figure 2). Finally, 31 studies were included in the meta-analysis, reflecting 16,362 healthy controls and 12,028 subjects with CHD. The control group in these 31 studies revealed no deviation from the Hardy–Weinberg equilibrium. The total results of the meta-analysis of these 31 studies, which involved 8 studies of Asian, 20 of Caucasian and 3 other ethnicities populations, are shown in Table 3 and 4. The meta-analysis revealed that the p.Met268Thr substitution is associated with CHD in the recessive model with OR, 1.156; 95% CI, 1.011–1.321;  $p = 0.034$  (Figure 3).



**Figure 2.** Flow chart representing the results of the search strategy and the details for exclusion.

**Table 3. Results of meta-analysis for AGT gene p.Met268Thr polymorphism and CHD risk in Asian, Caucasian and total populations**

Group	TT vs MM				MT vs MM				MT + TT vs MM				TT vs MM + MT			
	OR (95% CI)	$p$	$ph$	$I^2$	OR (95% CI)	$p$	$ph$	$I^2$	OR (95% CI)	$p$	$ph$	$I^2$	OR (95% CI)	$p$	$ph$	$I^2$
Total	1.14 (0.96–1.35)	0.13	< 0.001	60%	1.00 (0.89–1.13)	1.00	< 0.001	50%	1.11 (0.96–1.29)	0.17	< 0.001	73%	1.16 (1.01–1.32)	0.03	< 0.001	65%
Asian	0.72 (0.50–1.04)	0.08	0.66	0%	0.70 (0.48–1.01)	0.06	0.77	0%	0.73 (0.51–1.03)	0.08	0.68	0%	0.96 (0.83–1.10)	0.54	0.21	28%
Caucasian	1.10 (0.93–1.30)	0.27	0.00	55%	0.99 (0.92–1.07)	0.80	0.13	28%	1.01 (0.94–1.08)	0.80	0.05	39%	1.20 (0.99–1.45)	0.06	< 0.001	73%

OR – odds ratio; CI – confidence interval;  $ph$ ,  $p$ -values for heterogeneity from the Q test.

The heterogeneity test exhibited a true heterogeneity between studies for p.Met268Thr in the TT vs MM, MT vs MM, MT+TT vs MM, and TT vs MM+MT models with  $P_{\text{heterogeneity}} < 0.001$  (Table 3). On the other hand, the shape of the funnel's plot showed obvious evidence of asymmetry (Figure 4). Analysis of potential publication bias suggested the presence of a publi-

cation bias, based on Egger's test and the Begg–Mazumdar test, with  $p$ -values = 0.012 and 0.045, respectively. Subgroup analysis of the different ethnic groups showed that there is no significant association between p.Met268Thr and CHD in the Asian and Caucasian subgroups (Table 3).

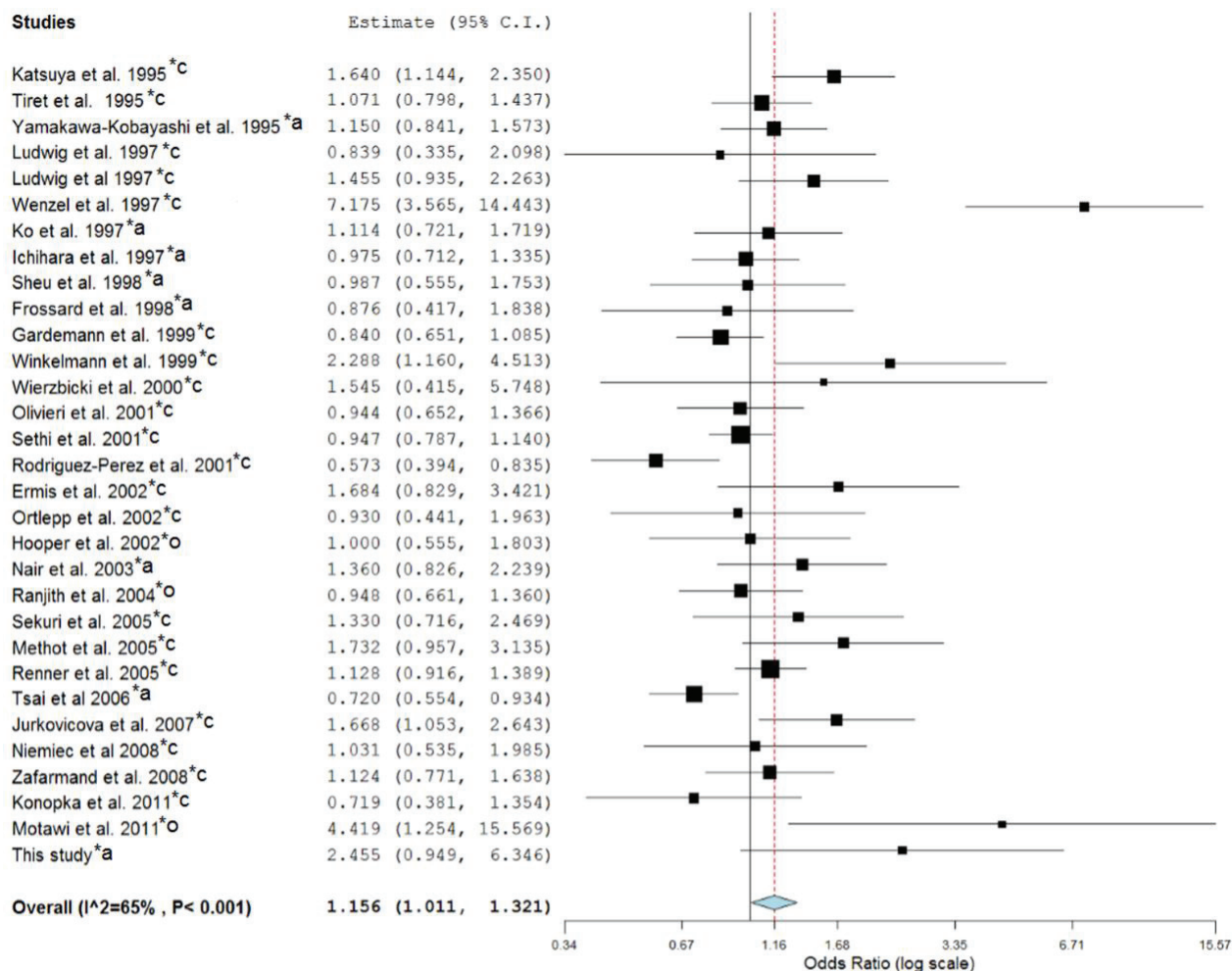


Figure 3. Meta-analysis for 31 studies of p.Met268Thr in the total population

The 8 studies of Asian, 20 of Caucasian and 3 other ethnic populations were included, which are labeled with <sup>\*a</sup>, <sup>\*c</sup> and <sup>\*o</sup>, respectively.

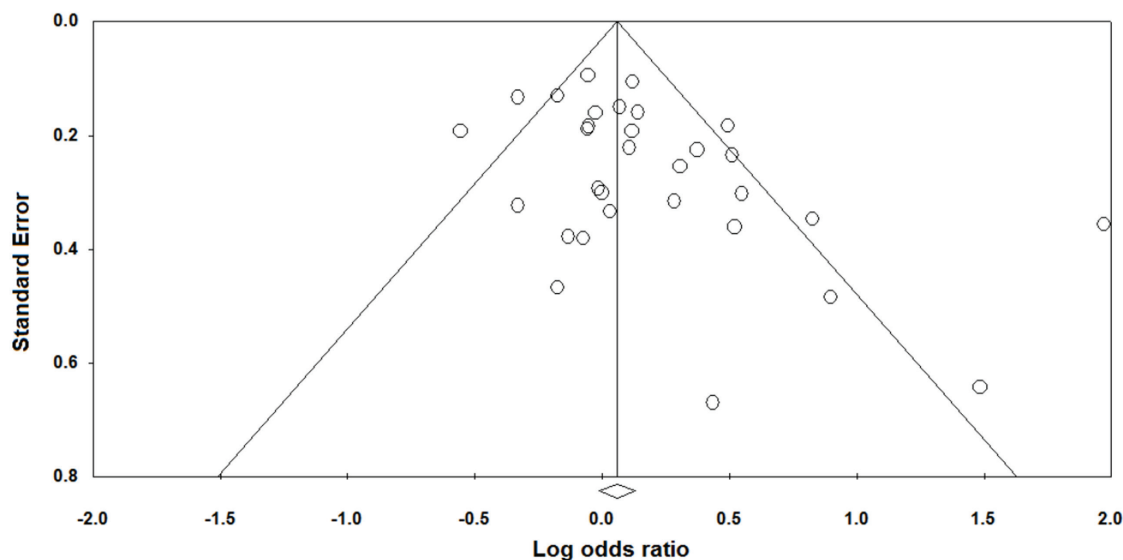


Figure 4. Begg's funnel plot for the recessive model in the overall analysis



**Table 4. Summary OR and 95% CI adjusted for multiple testing using the BH-FDR method**

Group	TT vs MM		MT vs MM		MT+TT vs MM		TT vs MM+MT	
	OR (95% CI)	$p_{FDR}$	OR (95% CI)	$p_{FDR}$	OR (95% CI)	$p_{FDR}$	OR (95% CI)	$p_{FDR}$
Total	1.14 (0.96–1.35)	0.227	1.00 (0.89–1.13)	1.000	1.11 (0.96–1.29)	0.227	1.16 (1.01–1.32)	0.120
Asian	0.72 (0.50–1.04)	0.107	0.70 (0.48–1.01)	0.107	0.73 (0.51–1.03)	0.107	0.96 (0.83–1.10)	0.540
Caucasian	1.10 (0.93–1.30)	0.800	0.99 (0.92–1.07)	0.800	1.01 (0.94–1.08)	0.800	1.20 (0.99–1.45)	0.800

OR—odds ratio; CI—confidence interval; FDR:  $p$ -value from the Benjamini–Hochberg method control for the false discovery rate.

## Discussion

Polymorphism in some key genes, such as *nitric oxide synthase* (OMIM: 600720) [36] and *p22phox* (OMIM: 608508) [51], might be genetic risk factors for cardiovascular disease. Genes involved in the renin–angiotensin system, such as angiotensinogen [11], angiotensin I-converting enzyme [12] and angiotensin II type 1 receptor [13], are good candidates to study CHD genetic risk factors. This system is well known to be involved in the control of blood pressure and plays an autocrine or paracrine role in cardiac remodeling and contributes to the pathophysiology of CHD [52, 53].

In the present study, we evaluated the association between AGT-p.Met268Thr polymorphism and coronary heart disease, followed by a meta-analysis. The genetic association study showed that there is a significant association between AGT-p.Met268Thr polymorphism and coronary heart diseases in the Iranian population. Our data introduced the 268T allele as a genetic risk factor for CHD in the study population ( $p = 0.005$ ). To date, several studies have evaluated the association between AGT-p.Met268Thr polymorphism and CHD [27, 28, 36], but some studies did not detect any association [29, 39, 45]. To clarify this, we performed a meta-analysis via combining more eligible studies, enlarging the sample size and performing a subgroup analysis. Our meta-analysis of the Asian population revealed that the 268MT genotype was more frequent in cases vs controls, which was statistically non-significant (OR, 0.696; 95% CI, 0.479–1.011;  $p = 0.057$ ). But a meta-analysis in the overall model revealed that AGT-p.Met268Thr polymorphism is associated with CHD in the recessive model (OR, 1.156; 95% CI, 1.011–1.321;  $p = 0.034$ ). The inconsistent data from multiple studies suggests that the role of AGT polymorphism in CHD may depend on ethnic and geographic factors.

SNPs may occur in coding or noncoding sequences. SNPs in noncoding sequences, as well as synonymous SNPs, can disrupt the gene expression or mRNA splicing [54, 55]; however, missense mutations are responsible for various attributed single gene disorders. Some studies reported that non-synonymous SNPs (nsSNP) are harmful for protein and mRNA structures [56, 57]. Most nsSNPs disturb the protein function through alteration of protein hydrophobicity [58, 59] or affecting the three-dimensional structure of protein [60, 61]. The exact pathogenic mechanisms of AGT deficiency by p.Met268Thr polymorphism in CHD are still unclear, but there are some speculated hypotheses in this regard. The p.Met268Thr as an nsSNP may alter the AGT function. Previous studies investigated the impact of AGT gene polymorphisms on the protein structure with a computational approach [10, 62]. Singh et al. reported that eight SNPs in the coding region of AGT may be deleterious for the structure of protein [10]. In addition, Raygan et al. reported that p.Met268Thr has a significant impact on the protein structure of AGT [62]. They reported that Met268Thr substitution may affect the hydrophobicity properties of AGT [62]. p.Met268Thr polymorphism of the human AGT gene has been associated with a variation of serum AGT concentration. Between 10% and 20% more plasma AGT concentration was seen in 268TT homozygotes compared to 268MM individuals [44, 63].

Xu et al. in 2007 performed a meta-analysis on the association of both p.Thr207Met and p.Met268Thr polymorphisms

in the AGT gene with CHD. They found no association between p.Thr207Met and CHD, but they reported a weak association between p.Met268Thr and CHD [64]. Zafarmand et al. in 2008 also reported that there is an increased risk of CHD by AGT p.Met268Thr polymorphism. However, they state that this association is weak and might be due to publication biases and HWE violation [50]. However, Li et al. in 2012 performed a meta-analysis on the association of AGT gene polymorphisms (p.Met268Thr, p.Thr207Met) with coronary heart disease solely in the Chinese population [65]. The meta-analysis showed significant associations of AGT gene polymorphisms (p.Met268Thr, p.Thr207Met) with CHD in the Chinese population [65]. Our data was consistent with Xu et al. [64] and Zafarmand et al. [50].

Pharmacogenomics is the study of the role of genetics in the response to a therapeutic intervention. Single nucleotide polymorphisms play an essential role in an individual's susceptibility to different diseases and variable responses to drugs. There is a continuous approach to detect the common and functional SNPs related to various diseases [66]. AGT-p.Met268Thr polymorphism is frequently assessed in pharmacogenomics studies of the renin–angiotensin system (RAS). Evidence has exhibited that AGT variants influence the risk of hypertension. Different plasma concentrations of angiotensinogen were also observed in hypertensive patients with different AGT variants [67]. Thus, AGT gene variants could be a probable candidate for pharmacogenomic RAS blockage intervention [66].

This topic has been addressed exclusively in literatures, but this case control is the first which investigates the association of this particular polymorphism with CHD in the Iranian population. However, this study suffered from an inadequate control group and lack of evaluations of gene–gene and gene–environment interactions. There are more updated methods for SNP genotyping, such as TaqMan probes, Sequenom MassARRAY system, SNaPshot, etc., but our funds for the experimental study were limited. Therefore, we applied the PCR-RFLP method as an inexpensive technique for SNP genotyping. Some other potential limitations of this study are as follows: first, our results were calculated based on unadjusted data regardless of confounding factors, such as age, sex, etc. Furthermore, we did not have access to the diet of subjects (such as salt and fat consumption), which may modulate the effects of p.Met268Thr polymorphism in CHD. Second, limiting the meta-analysis to English language papers may potentially lead to language bias. This meta-analysis also lacks sufficient data from African populations.

## Conclusions

The pooled data in the meta-analysis showed a weak association between AGT-p.Met268Thr and CHD, which may due to publication bias. Thus, we conclude that p.Met268Thr substitution might be a risk factor for CHD in susceptible individuals. In addition, we suggest further *in vitro* and *in vivo* analysis to find out the exact role of p.Met268Thr mutation in CHD.

**Acknowledgements.** The study was not supported by a specific grant from any organization. The authors thank all study participants in this case-control study. We are thankful to the clinical staff for recruiting the case and control volunteers.

Source of funding: This work was funded by the authors' own resources.

Conflict of interest: The authors declare no conflict of interests.

## References

- Libby P, Theroux P. Pathophysiology of coronary artery disease. *Circulation* 2005; 111(25): 3481–3488.
- Wilson PW. Established risk factors and coronary artery disease: the Framingham Study. *Am J Hypertens* 1994; 7(7 Pt 2): 7S–12S.
- El-Aziz TAA, Hussein YM, Mohamed RH, et al. Renin-angiotensin system genes polymorphism in Egyptians with premature coronary artery disease. *Gene* 2012; 498(2): 270–275.
- Zdravkovic S, Wienke A, Pedersen N, et al. Heritability of death from coronary heart disease: a 36-year follow-up of 20 966 Swedish twins. *J Intern Med* 2002; 252(3): 247–254.
- Khera AV, Kathiresan S. Genetics of coronary artery disease: discovery, biology and clinical translation. *Nat Rev Genet* 2017; 18(6): 331–344.
- Altshuler D, Daly MJ, Lander ES. Genetic mapping in human disease. *Science* 2008; 322(5903): 881–888.
- Zuk O, Schaffner SF, Samocha K, et al. Searching for missing heritability: designing rare variant association studies. *Proc Natl Acad Sci USA* 2014; 111(4): E455–E464.
- Nikpay, Goel A, Won HH. A comprehensive 1000 Genomes-based genome-wide association meta-analysis of coronary artery disease. *Nat Genet* 2015; 47(10): 1121–1130.
- Do AN, Irvin MR, Lynch AJ, et al. The effects of angiotensinogen gene polymorphisms on cardiovascular disease outcomes during anti-hypertensive treatment in the GenHAT study. *Front Pharmacol* 2014; 5: 210, doi: 10.3389/fphar.2014.00210.
- Singh KD, Karthikeyan M. Combined sequence and sequence-structure-based methods for analyzing RAAS gene SNPs: a computational approach. *J Recept Signal Transduct* 2014; 34(6): 513–526.
- Pedrinelli R, Ballo P, Fiorentini C, et al. Hypertension and stable coronary artery disease: an overview. *J Cardiovasc Med (Hagerstown)* 2013; 14(8): 545–552.
- Poorgholi L, Saffar H, Fathollahi MS, et al. Angiotensin – converting enzyme insertion/deletion polymorphism and its association with coronary artery disease in an Iranian population. *J Tehran Heart Cent* 2013; 8(2): 89–94.
- Ohishi M, Yamamoto K, Rakugi H. Angiotensin (1–7) and other angiotensin peptides. *Curr Pharm Des* 2013; 19(17): 3060–3064.
- Katsuya T, Morishita R. Gene polymorphism of angiotensin II type 1 and type 2 receptors. *Curr Pharm Des* 2013; 19(17): 2996–3001.
- Joshi PH, Xu H, LeStrange R, et al. The M235T single nucleotide polymorphism in the angiotensinogen gene is associated with coronary artery calcium in patients with a family history of coronary artery disease. *Atherosclerosis* 2013; 226(2): 433–439.
- Renner W, Nauck M, Winkelmann BR, et al. Association of angiotensinogen haplotypes with angiotensinogen levels but not with blood pressure or coronary artery disease: the Ludwigshafen Risk and Cardiovascular Health Study. *J Mol Med* 2005; 83(3): 235–239.
- Tsai CT, Hwang JJ, Ritchie MD, et al. Renin-angiotensin system gene polymorphisms and coronary artery disease in a large angiographic cohort: detection of high order gene-gene interaction. *Atherosclerosis* 2007; 195(1): 172–180.
- Wenzel K, Blackburn A, Ernst M, et al. Relationship of polymorphisms in the renin-angiotensin system and in E-selectin of patients with early severe coronary heart disease. *J Mol Med* 1997; 75(1): 57–61.
- Žak I, Balcerzyk A, Sarecka B, et al. Contemporaneous carrier-state of two or three “proatherosclerotic” variants of APOE, ICAM1, PPARG and PAI-1 genes differentiate CAD patients from healthy individuals. *Clin Chim Acta* 2005; 362(1–2): 110–118.
- Nalbantoglu S, Tabel Y, Mir S, et al. Association between RAS gene polymorphisms (ACE I/D, AGT M235T) and Henoch-Schönlein purpura in a Turkish population. *Dis Markers* 2013; 34(1): 23–32.
- Hossienzadeh CA, Moradi FH, Karimian M. Optimal conditions for amplification of microsatellite length polymorphisms such as poly (A) in 3' UTR of VDR gene. *G3M* 2016; 14(2): 4256–4261.
- Mantel N, Haenszel W. Statistical aspects of the analysis of data from retrospective studies of disease. *J Natl Cancer Inst* 1959; 22(4): 719–748.
- DerSimonian R, Laird N. Meta-analysis in clinical trials. *Control Clin Trials* 1986; 7(3): 177–188.
- Sharif A, Kheirkhah D, Sharif MR, et al. ABCB1-C3435T polymorphism and breast cancer risk: a case-control study and a meta-analysis. *J BUON* 2016; 21(6): 1433–1441.
- Ermis C, Tsai MY, Hanson NQ, et al. Angiotensin I converting enzyme, angiotensin II type 1 receptor and angiotensinogen polymorphisms and early myocardial infarction in Turkish population. *Thromb Haemost* 2002; 88: 693–694.
- Frossard PM, Hill SH, Elshahat YI, et al. Associations of angiotensinogen gene mutations with hypertension and myocardial infarction in a gulf population. *Clin Genet* 1998; 54(4): 285–293.
- Gardemann A, Stricker J, Humme J, et al. Angiotensinogen T174M and M235T gene polymorphisms are associated with the extent of coronary atherosclerosis. *Atherosclerosis* 1999; 145(2): 309–314.
- Hooper WC, Dowling NF, Wenger NK, et al. Relationship of venous thromboembolism and myocardial infarction with the renin-angiotensin system in African-Americans. *Am J Hematol* 2002; 70(1): 1–8.
- Ichihara S, Yokota M, Fujimura T, et al. Lack of association between variants of the angiotensinogen gene and the risk of coronary artery disease in middle-aged Japanese men. *Am Heart J* 1997; 134(2 Pt 1): 260–265.
- Jurkovicova D, Sedlakova B, Riecanaky I, et al. Cardiovascular diseases and molecular variants of the renin-angiotensin system components in Slovak population. *Gen Physiol Biophys* 2007; 26: 27–32.
- Katsuya T, Koike G, Yee TW, et al. Association of angiotensinogen gene T235 variant with increased risk of coronary heart disease. *Lancet* 1995; 345(8965): 1600–1603.
- Ko YL, Ko YS, Wang SM, et al. Angiotensinogen and angiotensin-I converting enzyme gene polymorphisms and the risk of coronary artery disease in Chinese. *Hum Genet* 1997; 100(2): 210–214.
- Konopka A, Szperl M, Piotrowski W, et al. Influence of renin-angiotensin system gene polymorphisms on the risk of ST-segment-elevation myocardial infarction and association with coronary artery disease risk factors. *Mol Diagn Ther* 2011; 15(3): 167–176.
- Ludwig E, Borecki I, Ellison R, et al. Associations between candidate loci angiotensin-converting enzyme and angiotensinogen with coronary heart disease and myocardial infarction: the NHLBI Family Heart Study. *Ann Epidemiol* 1997; 7(1): 3–12.
- Méthot J, Hamelin BA, Bogaty P, et al. ACE-DD genotype is associated with the occurrence of acute coronary syndrome in postmenopausal women. *Int J Cardiol* 2005; 105(3): 308–314.
- Motawi T, Shaker O, Taha M, et al. Endothelial nitric oxide synthase and angiotensinogen gene polymorphism in coronary artery diseases in Egypt. *Angiology* 2011; 62(2): 191–197.

37. Nair K, Shalia K, Ashavaid T, et al. Coronary heart disease, hypertension, and angiotensinogen gene variants in Indian population. *J Clin Lab Anal* 2003; 17(5): 141–146.
38. Niemiec P, Zak I, Wita K. The M235T polymorphism of the AGT gene modifies the risk of coronary artery disease associated with the presence of hypercholesterolemia. *Eur J Epidemiol* 2008; 23(5): 349–354.
39. Olivieri O, Stranieri C, Girelli D, et al. Homozygosity for angiotensinogen 235T variant increases the risk of myocardial infarction in patients with multi-vessel coronary artery disease. *J Hypertens* 2001; 19(5): 879–884.
40. Ortlepp JR, Lauscher J, Janssens U, et al. Analysis of several hundred genetic polymorphisms may improve assessment of the individual genetic burden for coronary artery disease. *Eur J Intern Med* 2002; 13(8): 485–492.
41. Ranjith N, Pegoraro R, Rom L, et al. Renin–angiotensin system and associated gene polymorphisms in myocardial infarction in young South African Indians: cardiovascular topics. *Cardiovasc J S Afr* 2004; 15(1): 22–26.
42. Rodríguez-Pérez JC, Rodríguez-Esparragón F, Hernández-Perera O, et al. Association of angiotensinogen M235T and A(-6)G gene polymorphisms with coronary heart disease with independence of essential hypertension: the PROCAGENE study. *J Am Coll Cardiol* 2001; 37(6): 1536–1542.
43. Sekuri C, Cam FS, Ercan E, et al. Renin–angiotensin system gene polymorphisms and premature coronary heart disease. *J Renin Angiotensin Aldosterone Syst* 2005; 6(1): 38–42.
44. Sethi AA, Tybjaerg-Hansen A, Gronholdt M, et al. Angiotensinogen mutations and risk for ischemic heart disease, myocardial infarction, and ischemic cerebrovascular disease. Six case-control studies from the Copenhagen City Heart Study. *Ann Intern Med* 2001; 134(10): 941–954.
45. Sheu WH, Lee W, Jeng C, et al. Angiotensinogen gene polymorphism is associated with insulin resistance in nondiabetic men with or without coronary heart disease. *Am Heart J* 1998; 136(1): 125–131.
46. Tiret L, Blanc H, Ruidavets JB, et al. Gene polymorphisms of the renin–angiotensin system in relation to hypertension and parental history of myocardial infarction and stroke: the PEGASE study. *Projet d'Etude des Gènes de l'Hypertension Artérielle Sévère à modérée Essentielle. J Hypertens* 1998; 16(1): 37–44.
47. Wierzbicki AS, Lambert-Hamill M, Lumb PJ, et al. Renin–angiotensin system polymorphisms and coronary events in familial hypercholesterolemia. *Hypertension* 2000; 36(5): 808–812.
48. Winkelmann BR, Russ AP, Nauck M, et al. Angiotensinogen M235T polymorphism is associated with plasma angiotensinogen and cardiovascular disease. *Am Heart J* 1999; 137(4 Pt 1): 698–705.
49. Yamakawa-Kobayashi K, Arinami T, Hamaguchi H. Absence of association of angiotensinogen gene T235 allele with increased risk of coronary heart disease in Japanese. *Lancet* 1995; 346(8973): 515.
50. Zafarmand MH, Van Der Schouw YT, Grobbee DE, et al. The M235T polymorphism in the AGT gene and CHD risk: evidence of a Hardy–Weinberg equilibrium violation and publication bias in a meta-analysis. *PLoS ONE* 2008; 3(6): e2533, doi: 10.1371/journal.pone.0002533.
51. Mazaheri M, Karimian M, Behjati M, et al. Association analysis of rs1049255 and rs4673 transitions in p22phox gene with coronary artery disease: a case-control study and a computational analysis. *Ir J Med Sci* 2017; 186(4): 921–928.
52. Dzau VJ. Cell biology and genetics of angiotensin in cardiovascular disease. *J Hypertens Suppl* 1994; 12(4): S3–S10.
53. Raynolds MV, Ferryman MB. The association between the angiotensin I converting enzyme gene polymorphism and cardiovascular disease. *Coron Artery Dis* 1995; 6(4): 302–309.
54. Jamali S, Karimian M, Nikzad H, et al. The c.–190 C> a transversion in promoter region of protamine1. *Mol Biol Rep* 2016; 43: 795–802.
55. Soleimani Z, Kheirkhah D, Sharif MR, et al. Association of CCND1 Gene c. 870G> A polymorphism with breast cancer risk: a case-control study and a meta-analysis. *Pathol Oncol Res* 2017; 23(3): 621–631.
56. Zamani-Badi T, Karimian M, Azami-Tameh A, et al. Association of C3953T transition in interleukin 1 $\beta$  gene with idiopathic male infertility in an Iranian population. *Hum Fertil (Camb)* 2017; 1–7, doi: 10.1080/14647273.2017.1384857.
57. Karimian M, Hosseinzadeh Colagar A. Human MTHFR-G1793A transition may be a protective mutation against male infertility: a genetic association study and in silico analysis. *Hum Fertil (Camb)* 2017; 1–9, doi: 10.1080/14647273.2017.
58. Salimi S, Keshavarzi F, Mohammadpour-Gharehbagh A, et al. Polymorphisms of the folate metabolizing enzymes: association with SLE susceptibility and in silico analysis. *Gene* 2017; 637: 161–172.
59. Talebi E, Karimian M, Nikzad H. Association of sperm mitochondrial DNA deletions with male infertility in an Iranian population. *Mitochondrial DNA A DNA Mapp Seq Anal* 2017; 1–9, doi: 10.1080/24701394.2017.1331347.
60. Karimian M, Nikzad H, Azami-Tameh A, et al. SPO11-C631T gene polymorphism: association with male infertility and an in silico analysis. *J Family Reprod Health* 2015; 9(4): 155–163.
61. Ebrahimi A, Hosseinzadeh Colagar A, Karimian M. Association of human methionine synthase-A2756G transition with prostate cancer: a case-control study and in silico analysis. *Acta Med Iran* 2017; 55(5): 297–303.
62. Raygan F, Karimian M, Rezaeian A, et al. Angiotensinogen-M235T as a risk factor for myocardial infarction in Asian populations: a genetic association study and a bioinformatics approach. *Croat Med J* 2016; 57(4): 351–362.
63. Abchee A, El-Sibai M, Youhanna S, et al. The I allele of the angiotensin converting enzyme I/D polymorphism confers protection against coronary artery disease. *Coron Artery Dis* 2010; 21: 151–156.
64. Xu MQ, Ye Z, Hu FB, et al. Quantitative assessment of the effect of angiotensinogen gene polymorphisms on the risk of coronary heart disease. *Circulation* 2007; 116(2): 1356–1366.
65. Li X, Li Q, Wang Y, et al. AGT gene polymorphisms (M235T, T174M) are associated with coronary heart disease in a Chinese population. *J Renin Angiotensin Aldosterone Sys* 2013; 14(4): 354–359.
66. Konoshita T, Consortium GDO, Investigators Study. Do genetic variants of the renin–angiotensin system predict blood pressure response to renin–angiotensin system–blocking drugs? A systematic review of pharmacogenomics in the renin–angiotensin system. *Curr Hypertens Rep* 2011; 13(5): 356–361.
67. Jeunemaitre X, Soubrier F, Kotelevtsev YV, et al. Molecular basis of human hypertension: role of angiotensinogen. *Cell* 1992; 71(1): 169–180.

Tables: 4

Figures: 4

References: 67

Received: 01.11.2017

Reviewed: 09.11.2017

Accepted: 28.11.2017

Addresses for correspondence:

Prof. Abasalt Hosseinzadeh

Department of Molecular and Cell Biology

Faculty of Basic Sciences University of Babolsar

Post Code: 47416-95447

Babolsar, Iran

Tel./Fax: +98 11 35302452

E-mail: hosseinzadehcolagarabasalt@gmail.com, ahcolagar@umz.ac.ir

Ali Abbasi, MD

Department of Cardiology

School of Medicine

Kashan University of Medical Sciences

Post Code: 8715988141

Kashan, Iran

Tel.: +98 31 55621158

E-mail: aliiabbasii01@gmail.com